

## DS3 DOUBLE SHEAR LOCKOUT UNIT



Double Shear Pin allows for 10,000 lbf. side load capacity.

Suitable for automatic or manual tooling.

Optional spring extend feature insures engagement even in the absence of air pressure.

High strength materials with corrosion and weld spatter resistant surface.

Solid state switch available.

Maintenance free operation.

Foot valve and disk available for manual trunion.

Index disk utilizes a compression coupler for quick assembly and stop position adjustment.

**SPECIFICATIONS:**

1. MAXIMUM 10,000lbf LOAD CAPACITY.
2. LOADS GREATER THAN 3,000lbf REQUIRE CUSTOMER MOUNTING TO BE HIGH STRENGTH STEEL AND GRADE 12.9 BOLTS.
3. FOR LOCKOUT DISK INFORMATION, SEE DS3D ORDERING SHEET.

**ORDERING INFORMATION**

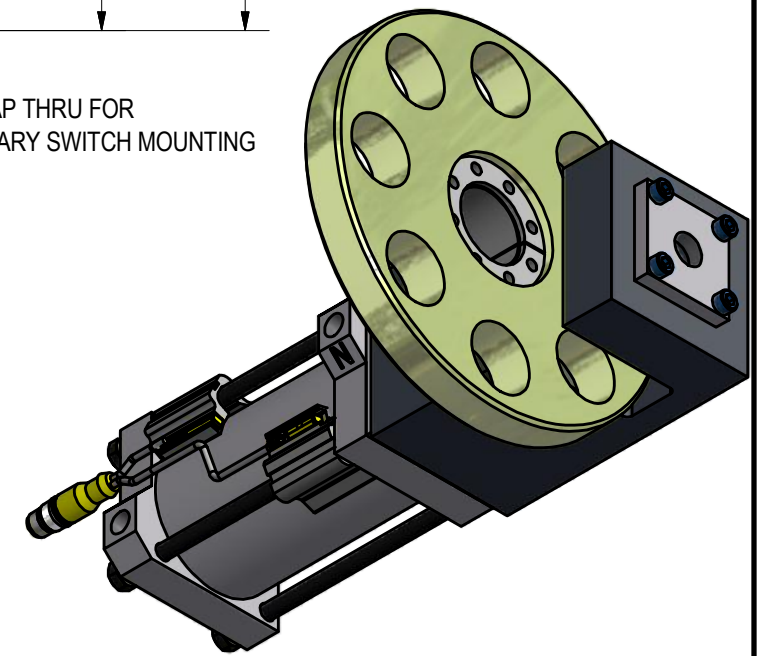
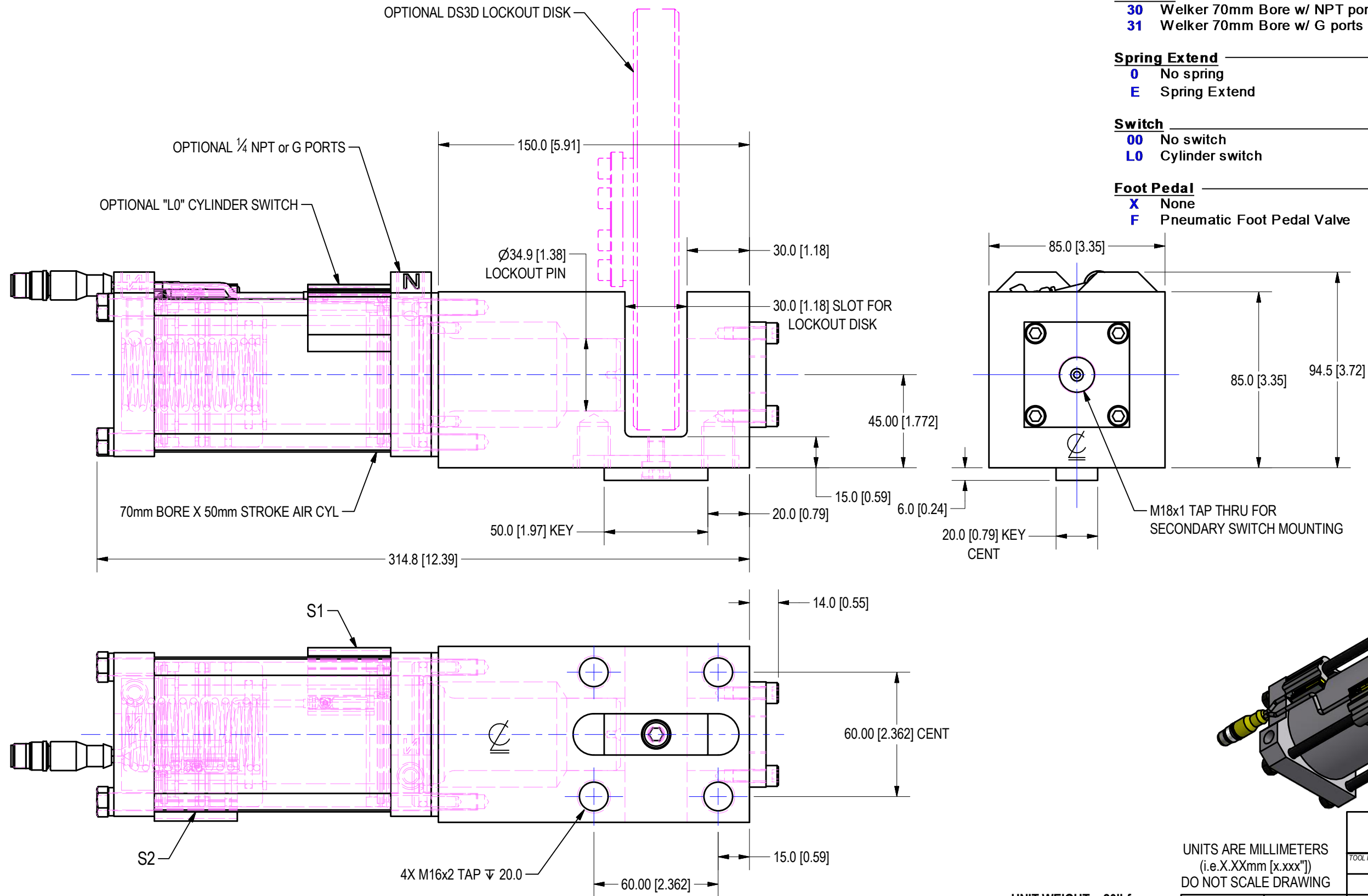
**D S 3 N 3 0 E L 0 X 0 0**

**Actuator**  
**30** Welker 70mm Bore w/ NPT ports  
**31** Welker 70mm Bore w/ G ports

**Spring Extend**  
**0** No spring  
**E** Spring Extend

**Switch**  
**00** No switch  
**L0** Cylinder switch

**Foot Pedal**  
**X** None  
**F** Pneumatic Foot Pedal Valve



UNIT WEIGHT = 20lbf  
 DOES NOT INCLUDE DISK ASSY

UNITS ARE MILLIMETERS  
 (i.e.X.XXmm [x.xxx"])  
 DO NOT SCALE DRAWING

DATE		STATUS		DRAWN BY		DATE		CHK'D BY		ENG APPROVAL	
10/5/2010		Released		D.J.H		5/31/2010		GSK		[Signature]	
SCALE		HALF		FILE NAME		DS3L01					

**WELKER BEARING COMPANY**

TOOL NAME: DS3 LOCKOUT ASSEMBLY

TEMPLATE

**ORDERING INFORMATION**

**DS3D 204 / 08 E 00**

**Disk Diameter**  
**204** Std Dia's - 204, 305, 407

**Number of Holes (See Hole Note)**  
**08** Number of Holes are Evenly Spaced About Diameter

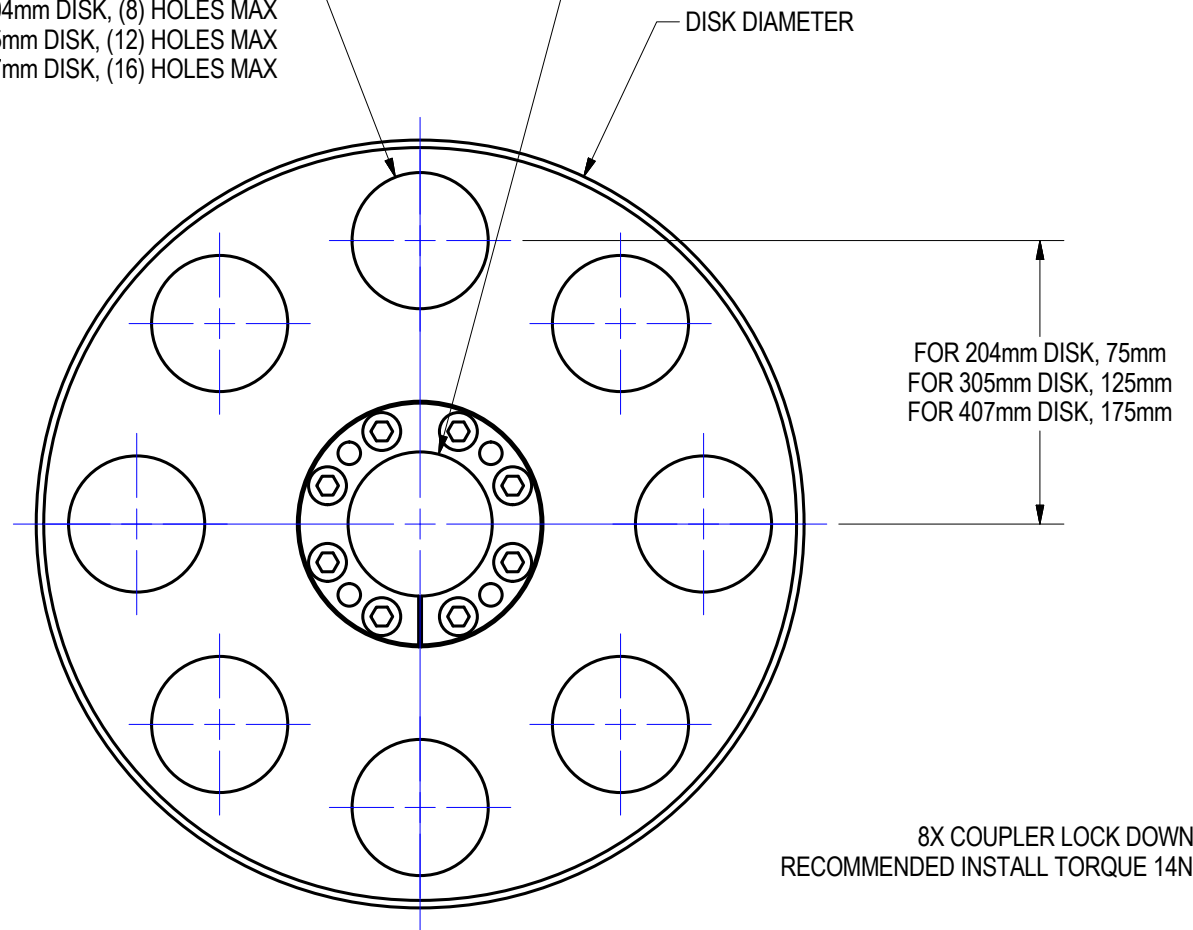
**Bore Type**  
**E** English Bore  
**M** Metric Bore

**CONTACT WELKER FOR CUSTOM ASSEMBLIES:**

1. SPECIAL HOLE PATTERNS
2. SPECIAL DISK DIAMETERS
3. KEYLESS COUPLER THRU BORE SIZES
4. HIGHER TORQUE CAPACITIES

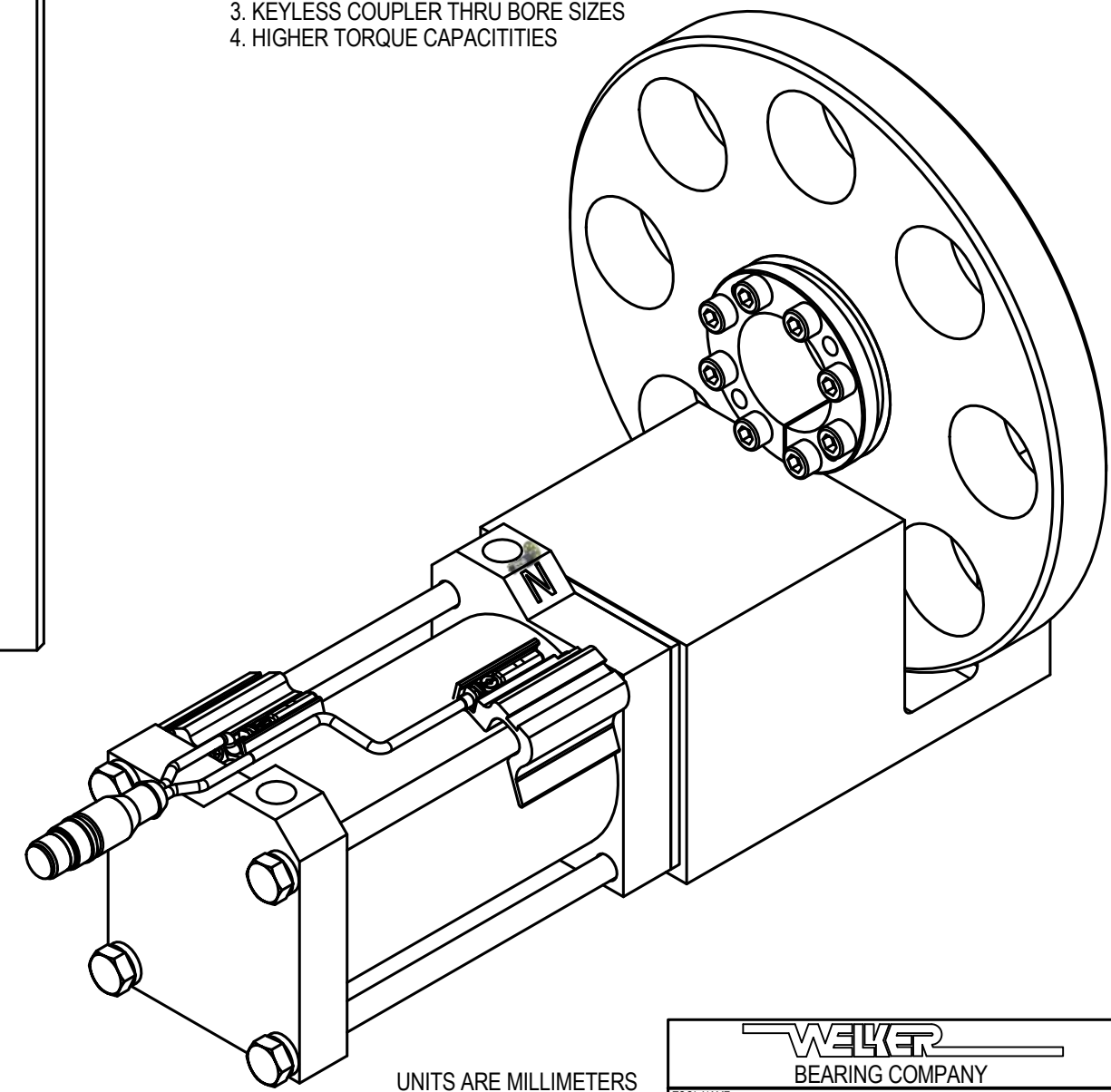
THRU BORE OF KEYLESS COUPLER  
 OPTION "E"  $\varnothing 1.500 +.002/-0.000$   
 OPTION "M"  $\varnothing 40.00 +.05/-0.00$   
 RECOMMENDED SHAFT SIZE IS NOMINAL  $+.00/-0.05 [+0.000/-0.002]$

**HOLE NOTE:**  $\varnothing 36.0 [1.42]$  THRU  
 MAX NUMBER OF HOLES VARIES W/ DISK DIA  
 FOR 204mm DISK, (8) HOLES MAX  
 FOR 305mm DISK, (12) HOLES MAX  
 FOR 407mm DISK, (16) HOLES MAX



8X COUPLER LOCK DOWN SCREWS  
 RECOMMENDED INSTALL TORQUE 14Nm [10lbf ft)

KEYLESS COUPLER  
 MAX TORQUE = 1070Nm [9500lbf in)



**ASSEMBLY WEIGHTS:**  
 204mm DIA w COUPLER = 9lbf  
 305mm DIA w COUPLER = 23lbf  
 407mm DIA w COUPLER = 43lbf

UNITS ARE MILLIMETERS  
 (i.e.X.XXmm [x.xxx"])  
 DO NOT SCALE DRAWING

<b>WELKER BEARING COMPANY</b>					
TOOL NAME DS3D LOCKOUT DISK					
TEMPLATE					
DRAWN BY DJH	DATE 5/31/2010	CHKD BY GSK	ENG APPROVAL		
DATE 10/5/2010	STATUS Released	SCALE HALF	FILE NAME	DS3DL01	